

*You are cordially invited
to the*

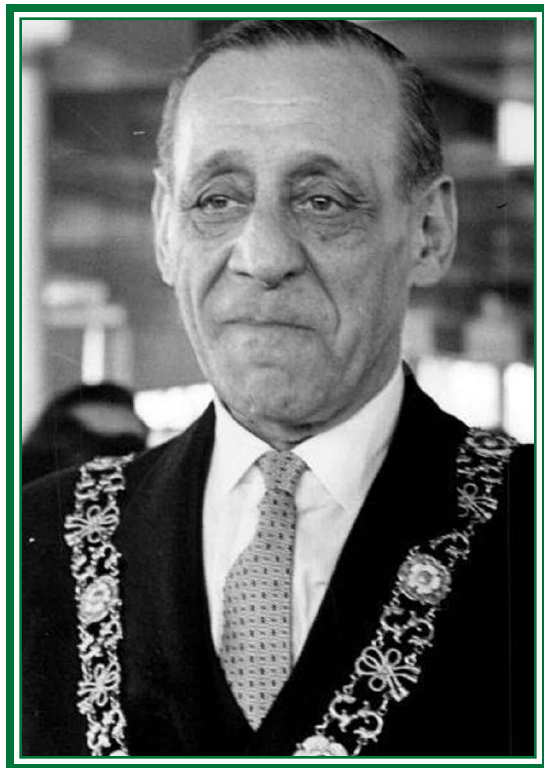
**EMERALD ISLE
IMMIGRATION CENTER'S
20TH ANNUAL**

ROBERT BRISCOE AWARDS

AT



**21 CLUB • 21 WEST 52ND STREET
NEW YORK, NY
MONDAY, MAY 13, 2013**





THE **BRISCOE AWARDS**
ARE BESTOWED EACH YEAR
ON MEMBERS OF NEW YORK'S
JEWISH COMMUNITY
IN APPRECIATION OF EFFORTS
TO BETTER THE LIVES
OF IRISH IMMIGRANTS.

ROBERT BRISCOE WAS
THE FIRST JEWISH LORD MAYOR
OF DUBLIN, IRELAND.
HE WAS ELECTED TO THAT OFFICE
IN 1956, A TIME WHEN
NEW YORK HAD NOT YET SEEN
ITS FIRST JEWISH MAYOR.

EMERALD ISLE IMMIGRATION CENTER'S
20TH ANNUAL
ROBERT BRISCOE AWARDS



ROBERT ASTROWSKY

ASSISTANT SECRETARY
UNITED FEDERATION
OF TEACHERS

2013
HONOREES



EDWARD GREBOW

PRESIDENT
& CEO
AMALGAMATED BANK

21 CLUB • 21 WEST 52ND STREET, NEW YORK, NY
MONDAY, MAY 13, 2013
RECEPTION: 6 P.M. TO 8 P.M..

TICKETS: \$175
RSVP TO **718-478-5502** OR **INFO@EIIC.ORG**

EIIC Queens Office

59-26 Woodside Ave.
Woodside, NY 11377
Phone: 718.478.5502
Fax: 718.446.3727



"Serving the Needs of our Community"

EIIC Bronx Office

4275 Katonah Ave.
Woodlawn, NY 10470
Phone: 718.324.3039
Fax: 718.324.7741

The Emerald Isle Immigration Center was founded by members of the Irish Immigration Reform Movement (IIRM) in 1988. Through the years, it has served the needs of tens of thousands of Irish and many other New York immigrants from all around the world.

On a daily basis, the center and its staff provide assistance on all aspects of immigration, social service, mental health, senior services and programs, employment and education. We are immensely proud of our services and the staff who deliver them. In order to sustain the critical and increasing demand for reliable immigration services we are very grateful for the continued funding we receive from the Irish Government, the City Council of New York, the City Council Speaker Christine Quinn, USCIS, New York State and the many private funders including the American Ireland Fund. Your support will help us maintain our current levels of programming and staff, in the face of increasing funding challenges.

www.eiic.org

